



## Our Sheep Farm

The Rupperts' Sheep Farm is a small family-run business in the village of Schwanheim amidst the Palatinate Forest. We started out with two sheep only; today, with ever growing demand we call a herd of more than sixty lambs our own.



We are certified sheep farmers and can thus guarantee sheep breeding appropriate to the species' needs; having personal contact to our customers allows us to share our professional expertise.

You can find more detailed information about the Rupperts' Sheep Farm under [www.schafshof-ruppert.com](http://www.schafshof-ruppert.com), including a schedule of Farmer's Markets where you can find us.

Of course you can contact us via phone at **(0 63 92) 31 29** or send us an e-mail to **(kontakt@schafshof-ruppert.com)**.

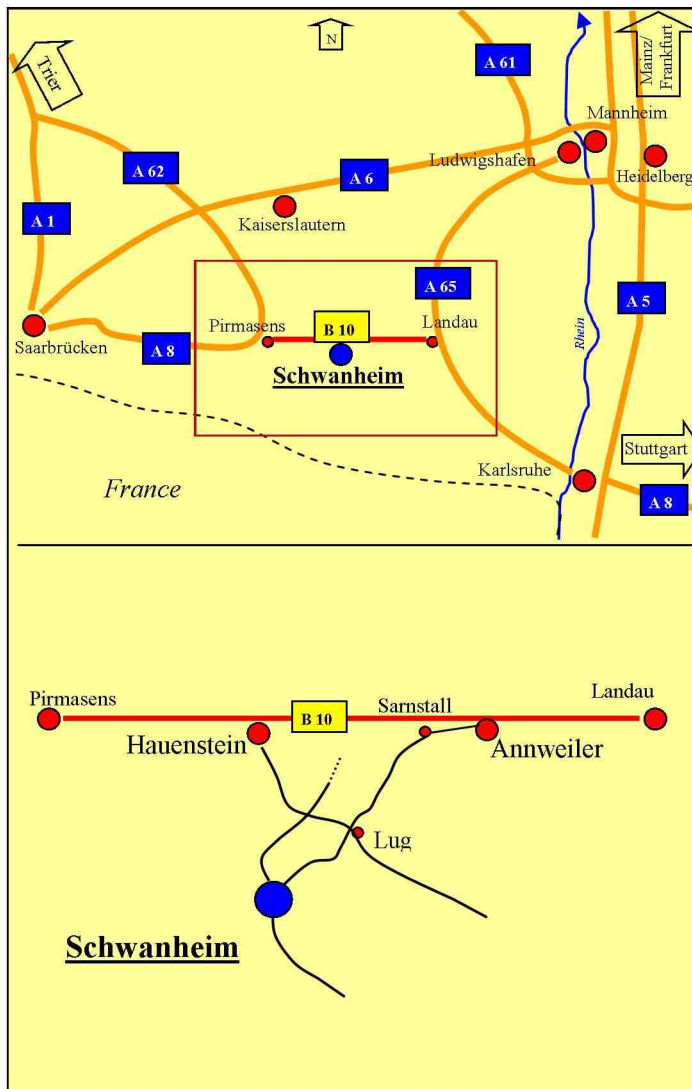
Just give us a call to arrange for your visit to our little Farm Shop in Schwanheim.



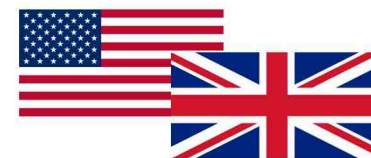
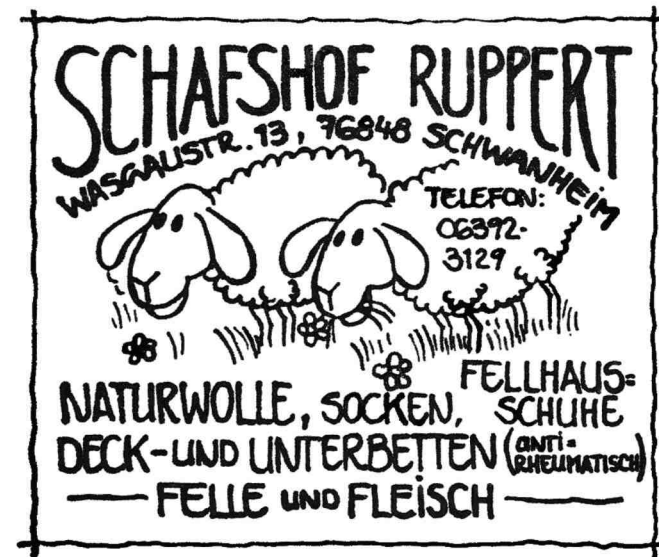
*The village of Schwanheim in the Palatinate Forrest.*



## How to find us



Schafshof Ruppert  
Wasgaustr.13  
76848 Schwanheim  
**Tel.: (0 63 92) 31 29**  
[www.schafshof-ruppert.com](http://www.schafshof-ruppert.com)  
E-Mail: kontakt@schafshof-ruppert.com



**Tel.: (0 63 92) 31 29**

[www.schafshof-ruppert.com](http://www.schafshof-ruppert.com)

E-Mail: kontakt@schafshof-ruppert.com



## What We Offer:

This leaflet gives you an overview of our product range; for more information visit our website or send us an e-mail.

### Foodstuff:

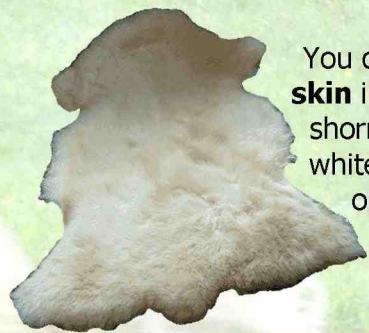


In addition to **canned sausage** we also offer **smoked and air-dried sausages**; our sausage products are solely made from lamb meat; we do not use any pork or beef or add any phosphate to our products. We only sell **meat** by the half, i.e. half a lamb or sheep; if requested, we are glad to cut the lamb for you.

Home-produced **Apple Juice** and **Eggs** complete our range of products.



### Wool and Sheep Skin



You can purchase **sheep skin** in its natural condition, shorn or with edges, in white or brown; dependent on the tanning process sheep skin can also be put into the washer.

Furthermore we offer natural, **untreated wool** of various sheep breeds but also dyed and combed wool. As an alternative to **machine-spun balls of wool** we also sell **hand-spun balls of wool**.



### Processed Products:



Our product range stretches from **blankets, duvets, pillows and rugs** to clothing made from lambs' wool and sheep skin such as **caps and gloves, sheep skin vests, slippers and socks**. Of course we offer various sizes for adults and children, even for babies.



Sheep skin used as **covers for steering wheels and bike saddles** as well as various **cuddly toys** complete our product range.



### Processing Equipment and Products:



In order to preserve your products' original condition you can also purchase **brushes and wool detergents**. For those who are into spinning or processing wool themselves we have **manual spindles and spinning wheels** on offer for which we are glad to provide some introductory training.



Not only for our products do we provide the right care, we also care about the well-being of your skin: our range includes **hand soap, baths salts and body lotion** made from sheep milk.

## Conservation of the countryside

We pay particular attention to sustainable farming.

*Acid grassland marked by hard grass only*



In past times fields and grassland were still cultivated but from one day to the next man turned his back on agricultural farming. In fall the plots were still plowed but were left idle in spring. Fields gradually turn into grassland or decertify as a result and thus limit biodiversity.



*Wild Orchids, listed under environmentally protected species, can now again be found among other flowers, herbs and grasses.*

Dead plants build up a cover on unused meadows causing the soil to acidify and making it possible for only hard grass to come through. Plants, however, requiring air at the roots simply die out. Having sheep graze the pastures taking up grass and dead plants counteracts the soil being covered; extensive farming therefore helps promote biodiversity.